

Institutional Brochure



International Institute of Health Management Research New Delhi

NAAC "A" accredited



About us

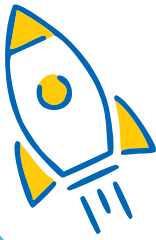
The International Institute of Health Management Research (IIHMR), New Delhi, NAAC 'A' accredited Institute is allied to the 'Society for Indian Institute of Health Management Research' which was established in October 1984 under the Societies Registration Act-1958. IIHMR-DELHI was setup in 2008 in response to the growing needs of sustainable management and administration solutions critical to the optimal function of healthcare sector both in India and in the Asia-Pacific region.

Over the years IIHMR-DELHI has emerged as an institute of repute both nationally and globally for producing socially conscious, skilled, and vibrant top-class health care management professionals. Our graduates are well-matched for the ever-changing health care sector and evolving social milieu. The institute has progressed as a leader in research, teaching, training, community extension programmes and policy advocacy in the field of health care. IIHMR has carved out a niche for itself through its cutting-edge academic curriculum, infrastructure, accomplished multi-disciplinary faculty and research.

The Institute as an autonomous body of international stature has been developing leaders for several years to shape tomorrow's healthcare by equipping the students in the fields of health, hospital, and health information technology.

Indian Council of Medical Research, Government of India recognised IIHMR Delhi as an ICMR- Collaborating Center of Excellence (ICMR-CCOE), with a validity of five years till Aug-2029. This great honor is the recognition of IIHMR Delhi's commendable achievements in biomedical research in the recent past.





OUR MISSION

IIHMR Delhi is an institution dedicated to the improvement in standards of health through better management of health care and related programs.

It seeks **to accomplish this through management research, training, consultation and institutional networking in a national and global perspective.**



OUR VISION

IIHMR is a leader in knowledge management to enable people achieve the best standards of health and lead an economically and socially productive life through improvement in health systems focusing on accessibility, affordability, equity and quality health care. It will continue to strive for excellence by providing holistic education, networking and collaborating with academia and industry and generating evidence for policy and program strategies for better management.

Key Domain Areas



Academics

Postgraduate programs.
Online postgraduate certificate programs.



Research

Research activities having high relevance to health policies and programs.



Training

Management development programs to improve management practices in health and related systems.

Academics

Courses Offered

Students are trained as a future decision-makers to think both critically and ethically.

1

MBA equivalent PGDM- Hospital and Health Management, AICTE Approved, NBA Accredited:
2 years Duration

2

Fellow Program in Management (FPM), AICTE Approved : **3 years Duration**

3

Online Postgraduate Certificate Program in Logistics & Supply Chain Management (PGCM),
AICTE Approved : **12 months Duration**

4

Online Postgraduate Certificate Program in Hospital Management, AICTE Approved:
12 months Duration

5

Online Postgraduate Certificate Program in Health Financial Management, AICTE
Approved: **12 months Duration**

MBA Equivalent PGDM - Hospital & Health Management

- ❖ Two-year full-time program
- ❖ Offered to graduates with bachelor's degree in any discipline & have taken any management aptitude tests
- ❖ **Specialization:** Health Management, Hospital Management and / Health Information Technology Management
- ❖ Scholarships for meritorious students
- ❖ Exposure to real world through summer internship, dissertation, industry visits, workshops & conferences and community engagement activities
- ❖ Excellent placement record

Fellow Program in Management (FPM)

- ❖ Intended for individuals working in Healthcare Industry, Government, and Social Sector
- ❖ 3-year doctoral AICTE approved program
- ❖ Provides a conducive environment for enhancing problem solving and critical thinking skills
- ❖ Training by multidisciplinary, experienced faculty and industry experts
- ❖ Fellow program in management will prepare prospective scholars to become highly skilled and innovative researchers and teachers by enhancing their research acumen and analytical skills
- ❖ Focus on translating research into publications for wider dissemination in industry circles.
- ❖ Flexible structure for differential needs

Post Graduate Certificate Program in Logistics and Supply Chain Management

- ❖ Approved by AICTE
- ❖ One year full time
- ❖ Online program in logistics and supply chain management with an overall goal to provide a fundamental understanding of key issues related to quality control of materials, legal and ethical issues, measuring materials management performance in supply chain has been designed

Post Graduate Certificate Program in Health Financial Management

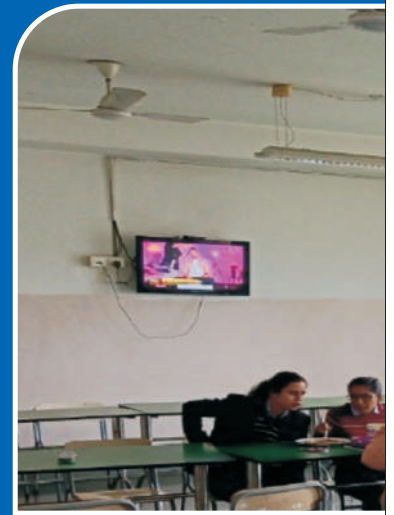
- ❖ Online program designed for healthcare professionals to enhance their financial management skills for better decision making under public health environment
- ❖ A duration of 12 months distributed into two semesters
- ❖ Contact programs organized at IIHMR Delhi campus

Post Graduate Certificate Program in Hospital Management

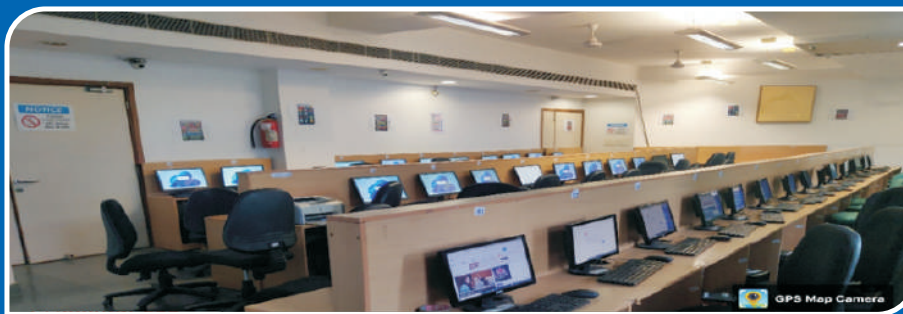
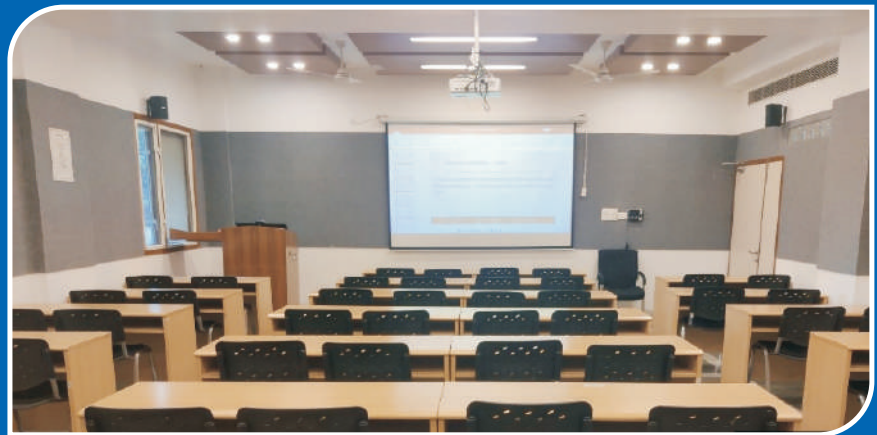
- ❖ 12 months online program for developing requisite managerial and business skills in hospital management
- ❖ Provides opportunity to the working individuals seeking higher education while working
- ❖ Online lectures supplemented by case studies, groupwork, self-evaluation, assignments, quizzes, and video presentation
- ❖ Contact programs organized at IIHMR Delhi campus

OUR

Well Equipped Library



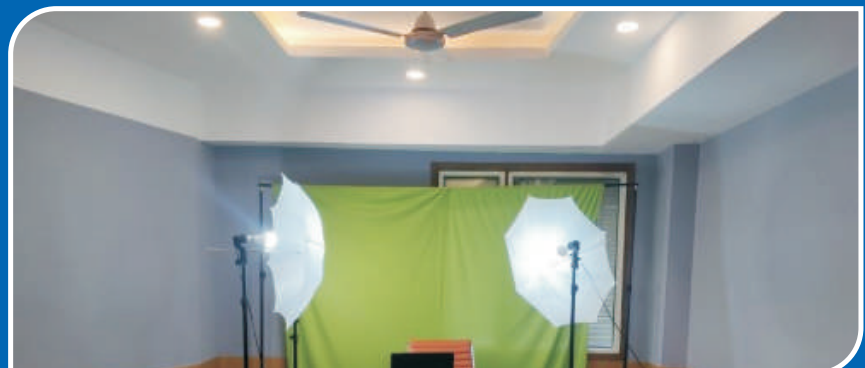
Smart
Classroom



Computer
Lab

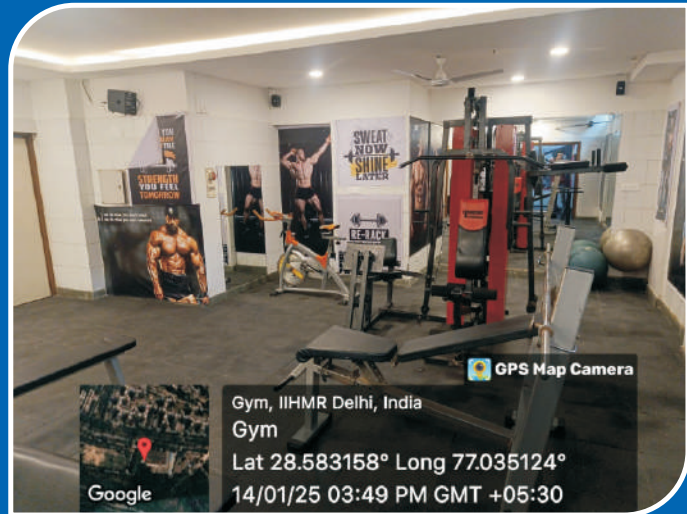


Media Room



STRENGTHS

On Campus Gym



In-House Cafeteria

Innovation Cell



In House Students Counselling



Multi-Disciplinary Faculty and Staff

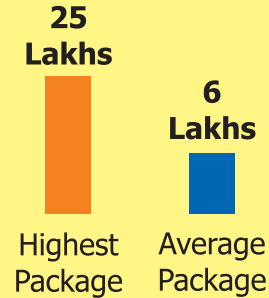


Excellent Placement Record

Number of Company Visited



Packages



Top Recruiters

Health Stream



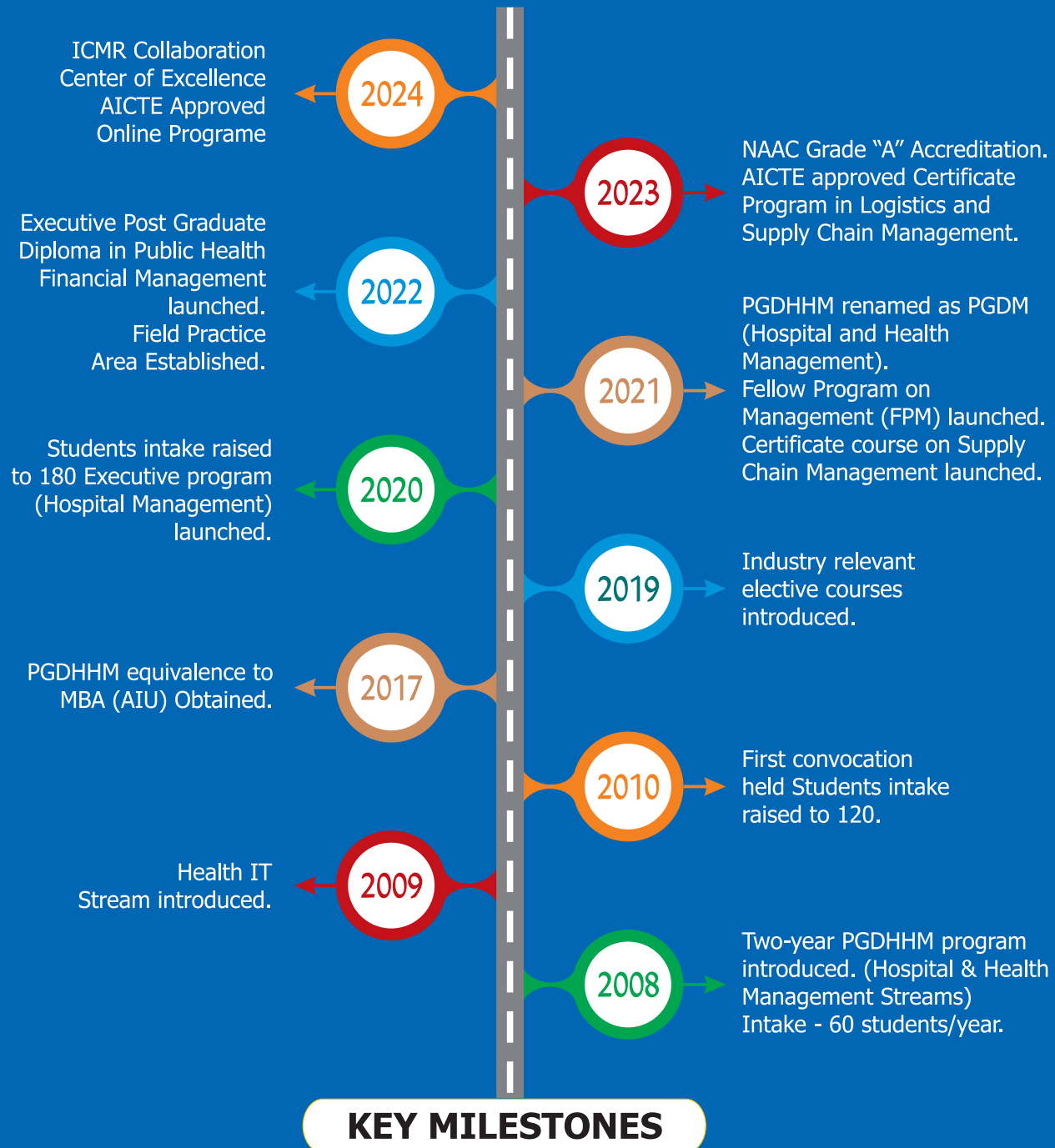
Hospital Stream



Health IT Stream



We strive for self-improvement for delivering the best



"IIHMR Delhi is dedicated to improving
standards of health care through
BETTER MANAGEMENT"

Training & Capacity Building Programs

- ❖ IIHMR Delhi is a leading training institution
- ❖ Aims to develop managerial and leadership skill amongst health professionals across the world
- ❖ Training and teaching includes systems-thinking approaches to serious and complex societal problems
- ❖ Strong public and private industry connect onsite and offsite trainings
- ❖ Collaboration with major universities and organizations to provide customized national and international trainings
- ❖ **Key collaborators:** ICMR, National Health Mission, National Health Authority, NHSRC, WHO, UNICEF, IIT Mumbai, ISRO, Vital Strategies, Mahidol University-Bangkok, Imperial College- London, Jaffna University- Sri Lanka;

IIHMR'S TRAINING PROGRAMS ATTRACT PARTICIPANTS FROM ACROSS COUNTRIES



- | | |
|---------------------------|------------------|
| • India | • Indonesia |
| • Nepal | • Malaysia |
| • Afghanistan | • Timor-Leste |
| • Sri Lanka | • Greece |
| • Myanmar | • United Kingdom |
| • Maldives | • Malawi |
| • United State of America | • Uganda |
| • Taiwan | • Nigeria |
| • Phillippines | • Egypt |

IIHMR Delhi Training programs stands out with



Client centered and practically oriented learning processes.



High quality pre-recorded videos/study material for reference.



Evidence based & updated curriculum designed for multidisciplinary nature of the participants.



Certification-oriented training.



Online, contact based & hybrid mode of contextual learning with the help of innovative case-studies/ exercises/ games.

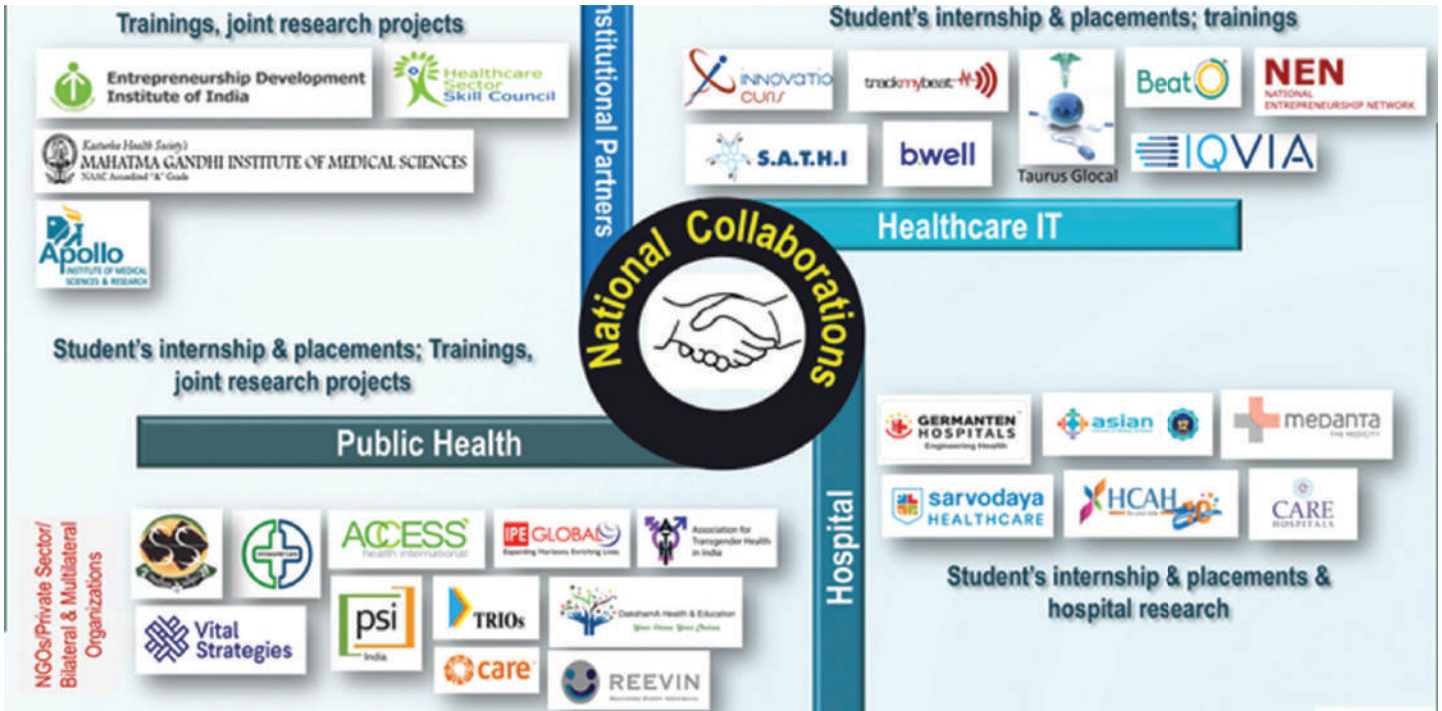


Pool of renowned in-house & external experts of the healthcare industry.

Research at IIHMR Delhi

- ❖ Thrust Areas - Maternal and Child Health, Environmental Health, Non Communicable Diseases, Infectious Diseases, Quality of Care, Health System Strengthening, Health Economics, Digital Health
- ❖ Faculties in Diverse Disciplines - Public Health, Hospital Management, Health Informatics, Social Sciences, Statistics and Demography, Health Economics, Health Financing, HR
- ❖ Evaluation Research, Formative Research, Implementation Research, Operations Research, Survey Research, Evidence Based Research, Health Technology Assessments, Clinical Trials, Economic Evaluation, Systematic reviews and metanalysis
- ❖ Registered Institutional Review Board (IRB) as per Indian Council of Medical Research's guidelines
- ❖ Recognition as Scientific and Industrial Research Organization (SIRO) by the Department of Scientific and Industrial Research, Government of India
- ❖ Supportive Environment and Infrastructure for Research
- ❖ Research Collaborations with Public and Private Organizations/ Universities (National & International)
- ❖ Empanelment with National Health Systems Resource Centre (NHSRC) and State Innovations in Family Planning Services Project Agency (SIFPSA)

Partners



Community Connect

Field Practice Area: Goyla Dairy

- ❖ An Urban area in South-West Delhi
- ❖ Has a population of 55000 with 13000 Households
- ❖ Permitted by Govt of Delhi to be adopted by IIHMR Delhi as Field Practice Area



Line-listing of the survey area of Goyla Dairy by IIHMR students

Focus of Community Engagement

- ❖ To develop a connection between future health management professionals and the community to enable them to identify and manage key individual and community health needs by mobilizing locally available resources
- ❖ To demonstrate the importance of community engagement in public health decision making and policies through pilot studies
- ❖ To help create better communication and help improve health outcomes in the community



CCEH- Centre for Climate, Environment & Health NCDC-MoHFW

- ❖ IIHMR-Delhi has been proposed as Centre of Excellence under the National Programme on Climate Change and Human Health (NPCCHH) by NCDC, Ministry of Health and Family Welfare, India
- ❖ Build capacity for researchers and practitioners
- ❖ Conduct training programs for diverse stakeholders
- ❖ Organize relevant national and international meetings
- ❖ Publish work through blogs, working papers, articles, books and other means



Centre for Entrepreneurship, Innovation and Incubation

- ❖ IIHMR Delhi has established a center for Entrepreneurship, Innovation and Incubation in November 2021
- ❖ Non-Profit Initiative
- ❖ To create a vibrant local healthcare innovation ecosystem
- ❖ Educate and sensitize students, faculties, alumni, and other budding entrepreneurs by launching skill- based training and academic programs related to entrepreneurship and innovation
- ❖ Provide mentorship and develop better cognitive ability among students Establish a standard process for scouting ideas and pre-incubation of ideas
- ❖ Facilitate collaborations and partnerships with Industry, academia, R & D institutions, financial institutions, and various stakeholders for establishing start-up support mechanism.
- ❖ IIHMR Delhi has been recognized as ICMR Collaborating Centre of Excellence (2025-29) for its outstanding contribution in the field of biomedical research
- ❖ IIHMR Delhi is committed to capacitate professional workforce on various skills pertaining to implementation research, clinical research and policy related endeavours

GREEN IIHMR

- ❖ Under CoE, IIHMR Delhi inaugurated an EV charging station within IIHMR-D campus to encourage the culture of zero emission drive and regularly plant saplings to promote health through a greener and cleaner planet

ACTIVITIES

Synapse - E Newsletter

- ❖ A monthly e-health newsletter
- ❖ 1st issue was released in February 2009
- ❖ Developed by students for the benefit of Health Managers who may like to update themselves on various recent managerial issues of the world
- ❖ Synapse covers news from the campus, focuses on the academic milestones, student's research corner and some top headlines







CONTACT US IIHMR



Plot No.,3, Sector 18A, Dwarka, New Delhi-110075



011-30418900 | 1800 102 9120 | +91 74288 95912



info.delhi@iihmrdelhi.edu.in / admissionsdelhi@iihmrdelhi.edu.in



www.iihmrdelhi.edu.in



www.facebook.com/iihmrdelhi



www.instagram.com/iihmrdelhi



www.twitter.com/iihmrdelhi



www.linkedin.com/company/iihmrdelhi



www.youtube.com/channel/UCc_nECFv4Rv-vPyzZZjSikQ